

REORGANIZATION TEMPLATE

MILWAUKEE COUNTY DISTRICT
ATTORNEY'S OFFICE

Why Change Anything?

- ▶ Over 700 people shot in the City last year, (80 fatally). Cycle of violence.
- ▶ Experience following violent gangs, drug organizations and armed robbery crews. Two degrees of separation.
- ▶ Homicide Review Commission findings.
- ▶ Commitment of other agencies to change.
- ▶ Disposition times on homicide, violent crime, drug cases.

Why Change (cont.)?

- ▶ Potential that we will be losing Federal grant funding in future, with loss of up to 10 ADA positions in next 18-24 months.
- ▶ Increase in numbers, severity and time commitment for felony offense review—(recorded confessions, complex laws).
- ▶ Need for more efficient use of city and suburban law enforcement resources---*overtime*.

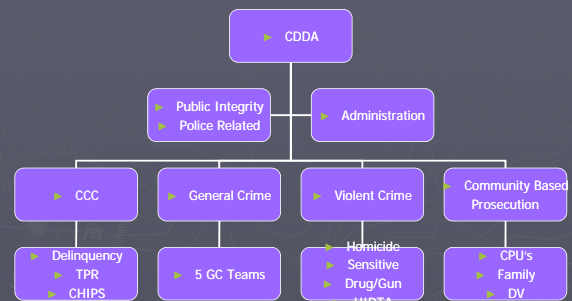
Why Change (cont.)?

- ▶ Improve supervision, guidance and training for young ADA's—avoid horizontal intake of cases.
- ▶ Increase Domestic violence conviction rates.
- ▶ OAR's
- ▶ Need to divert selected offenders into accountable alternative programs based on reasonable information and assessments.
- ▶ Commitment to Alternatives to Incarceration.

Organization

- ▶ District Attorney
- ▶ 5 Deputy District Attorneys (1 Chief)
- ▶ 126 Assistant District Attorneys
- ▶ 154 support staff, 5 supervisors
- ▶ 40 grant funded positions in office (limits flexibility in assignment).

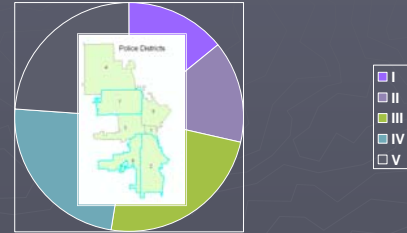
Schematic



Police Related Prosecution

- ▶ Review all incidents with an an exclusively dedicated, experienced prosecutor.
- ▶ Develop protocols to deal with most difficult incidents---use of force.
- ▶ Work closely with Public Defenders Office, Sheriff's Department, Professional Performance Division and our investigators to identify cases for independent investigation review.
- ▶ Expedite the determination of whether use of force was justified or not.

Geographic Responsibility



Geographic Responsibility



Team Assignments

- ▶ Team 1: MPD #3, MPD #4, Wauwatosa
- ▶ Team 2: MPD#7, Brown Deer, Fox Point, River Hills
- ▶ Team 3: MPD #6, Franklin, Greendale, Greenfield, Hales Corners, West Allis, West Milwaukee
- ▶ Team 4: MPD #5, MPD #1, Shorewood, Whitefish Bay, Glendale, Bayside, UWM
- ▶ Team5: MPD #2, Cudahy, St. Francis, South Milwaukee, Oak Creek

General Crimes

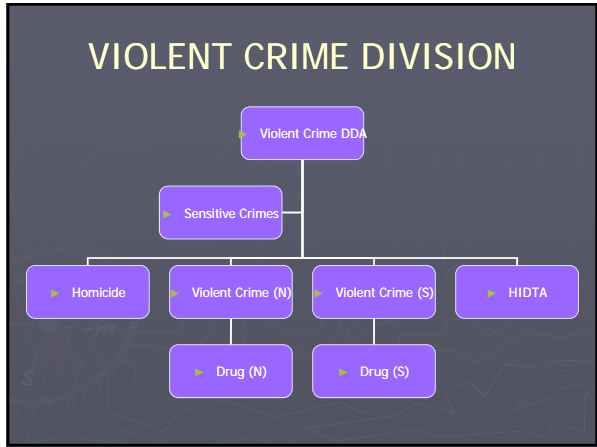
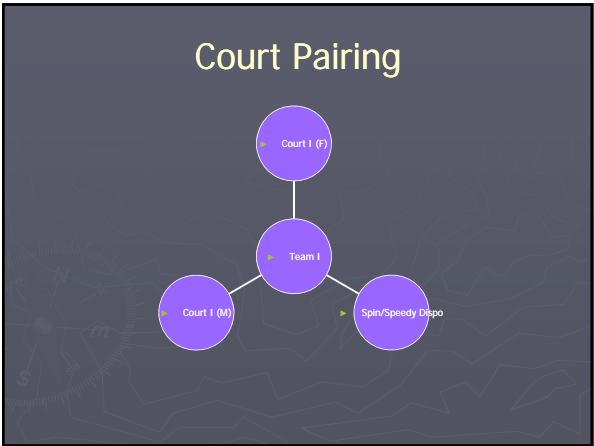


TEAM CONFIGURATION

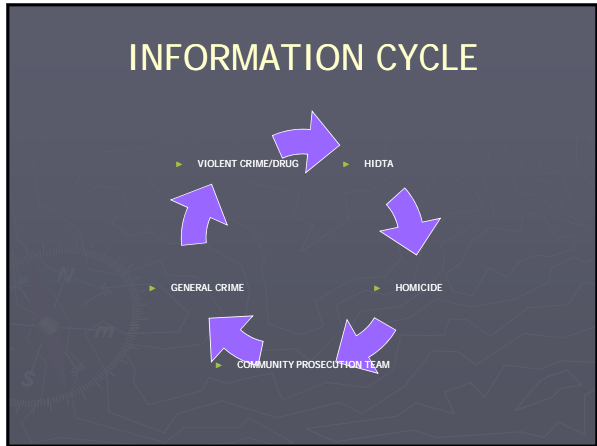


SIX WEEK CYCLE

Charge (local)	Trial	Trial	Trial	Trial	Charge (CJF)
Charge (CJF)	Charge (local)	Trial	Trial	Trial	Trial
Trial	Charge (CJF)	Charge (local)	Trial	Trial	Trial
Trial	Trial	Charge (CJF)	Charge (local)	Trial	Trial
Trial	Trial	Trial	Charge (CJF)	Charge (local)	Trial
Trial	Trial	Trial	Trial	Charge (CJF)	Charge (local)



- ### VIOLENT CRIME COURTS
- ▶ Three Homicide/Sensitive Crime Courts
 - ▶ Two Drug Courts
 - ▶ Two Violent Crime Courts
 - ▶ Speedy Dispo/Spin Court
 - ▶ (Total of 8 violent crime, 11 General Crime and 3 Domestic Violence Courts)
 - ▶ (Each Division has a Speedy Dispo/Spin Ct)



- ### Community Based Prosecution
- ▶ 6 Community Prosecutors (geographically based)
 - ▶ Family Welfare & Truancy
 - ▶ Domestic Violence Unit
 - ▶ Restorative Justice
 - ▶ Community Based Alternatives to Incarceration (pre-charge, post charge diversion)

